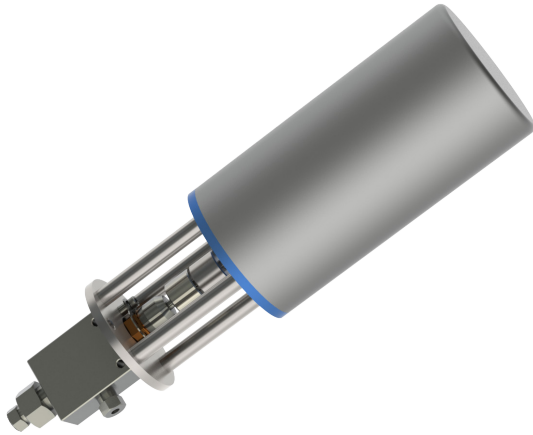


Electric Flow Control Valve

Pressures to 65,000 psi



Electric Flow Control Valve

MAXPRO'S Electric Flow Control Valves are designed for metering small flow rates with precise repeatable control for both gas and liquids using an electric control signal. The internal microprocessor controls motor voltage and current to insure optimal stem location and flow repeatability. **These valves are for metering control only, and are not recommended to be used as complete shutoff valves.** All Flow Control valves come with female coned and threaded connections.

O.D. Tube Size	Connection Type	Orifice Size (in.)	Rated Cv	Press/Temp (psi@RT)**
1/4"	1/4" HF	0.062	0.025	65,000

**See page 2 in the Technical Section for Pressure/Temperature Rating Chart.

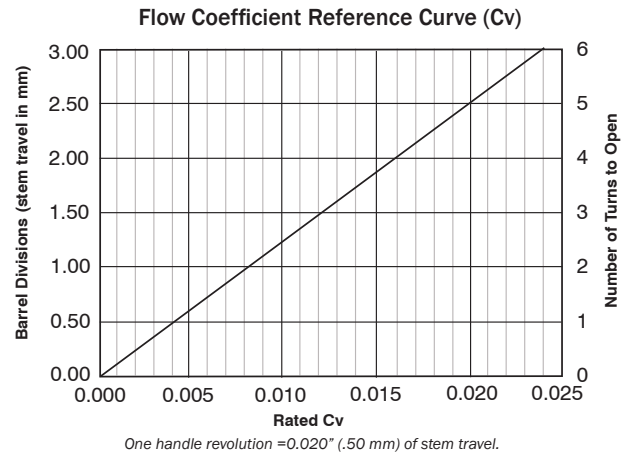
Ordering Information

Typical catalog number: **65V4H882-MVCV-10**

65V	4H	88	2	-MV	CV-10
Valve Series	O.D. Tube Size	Stem Type	Body Pattern	Option	Control input
65V	4H - 1/4"	88 - REGULATING stem with replaceable seat	2 - two-way angle	MV - Micro Metering	CV-10 = 0-10 VDC CV-20 = 4-20 mA

Actuator Features:

- Power Requirement: 24 VDC @ 50 Watts
- Control Input: 0-10 VDC or 4-20 mA
- Output Torque: 75 in lbs
- Actuator Rating: IP65 Weatherproof (NEMA 4X)
- Actuator Housing & Frame: Anodized Aluminum Housing
- Operating Temperature: -22°F to 175°F
- Cable Length: 2 Feet



Temperature Ranges

Standard valves are supplied with Teflon/Carbon packing and may be operated to 450°F. Consult MAXPRO for higher temperature packing ratings.

Catalog Number	Control Input	Number of Rotations	Valve Rotations/Minute	Dimensions (in.)							Block Thickness
				A	B	C	D	E	F	G	
65V4H882-MVCV-10	0-10 VDC	6	14	4.10	8.25	3.50	1.31	2.62	2.00	1.00	1.02
65V4H882-MVCV-20	4-20mA	6	14	4.10	8.25	3.50	1.31	2.62	2.00	1.00	1.02

Micrometering Valves are not recommended to be used as shutoff valves, operating these valves below the "0" barrel position may result in permanent stem damage.

All dimensions are for reference only and are subject to change.

