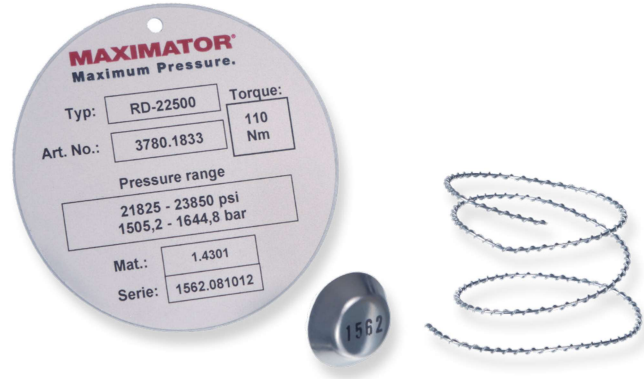




## 1/4" Rupture Discs

1/4" angular rupture discs are designed to be used with MAXIMATOR safety head assemblies. Minimum rupture disc pressure ratings should be at least 110% of system operating pressure. The standard material is 1.4404 (SST 316L). The pressure ranges indicated in the table below are at room temperature (22°C/72°F).

Other materials and pressure ranges are available upon request.



Catalog Number	Pressure range psi (bar)
RD-1000-H2	970 - 1,060 <b>(66.9 - 73.1)</b>
RD-1200-H2	1,164 - 1,272 <b>(80.3 - 87.7)</b>
RD-1500-H2	1,455 - 1,590 <b>(99.7 - 109.7)</b>
RD-1750-H2	1,697 - 1,855 <b>(117 - 127.9)</b>
RD-2000-H2	1,940 - 2,120 <b>(133.8 - 146.2)</b>
RD-2500-H2	2,425 - 2,650 <b>(167.2 - 182.8)</b>
RD-3000-H2	2,910 - 3,180 <b>(200.7 - 219.3)</b>
RD-3500-H2	3,395 - 3,710 <b>(234.1 - 255.9)</b>
RD-4000-H2	3,880 - 4,240 <b>(267.6 - 292.4)</b>
RD-4500-H2	4,365 - 4,770 <b>(301 - 329)</b>
RD-5000-H2	4,850 - 5,300 <b>(334.5 - 365.5)</b>

Catalog Number	Pressure range psi (bar)
RD-5500-H2	5,335 - 5,830 <b>(367.9 - 402.1)</b>
RD-6000-H2	5,820 - 6,360 <b>(401.4 - 438.6)</b>
RD-6500-H2	6,305 - 6,890 <b>(434.8 - 475.2)</b>
RD-7000-H2	6,790 - 7,420 <b>(468.3 - 511.7)</b>
RD-7500-H2	7,275 - 7,950 <b>(501.7 - 548.3)</b>
RD-8000-H2	7,760 - 8,480 <b>(535.2 - 584.8)</b>
RD-8500-H2	8,245 - 9,010 <b>(568.6 - 621.4)</b>
RD-9000-H2	8,730 - 9,540 <b>(602.1 - 657.9)</b>
RD-9500-H2	9,215 - 10,070 <b>(635.5 - 694.5)</b>
RD-10000-H2	9,700 - 10,600 <b>(669 - 731)</b>
RD-11000-H2	10,670 - 11,660 <b>(735.9 - 804.1)</b>

Catalog Number	Pressure range psi (bar)
RD-12000-H2	11,640 - 12,720 <b>(802.8 - 877.2)</b>
RD-13000-H2	12,610 - 13,780 <b>(869.7 - 950.3)</b>
RD-14000-H2	13,580 - 14,840 <b>(936.6 - 1023.4)</b>
RD-15000-H2	14,550 - 15,900 <b>(1,003.4 - 1,096.6)</b>
RD-16000-H2	15,520 - 16,960 <b>(1,070.3 - 1,169.7)</b>
RD-17000-H2	16,490 - 18,020 <b>(1,137.2 - 1,242.8)</b>
RD-18000-H2	17,460 - 19,080 <b>(1,204.1 - 1,315.9)</b>
RD-19000-H2	18,430 - 20,140 <b>(1,271 - 1,389)</b>
RD-20000-H2	19,400 - 21,200 <b>(1,337.9 - 1,462.1)</b>
RD-21000-H2	20,370 - 22,260 <b>(1,404.8 - 1,535.2)</b>
RD-22000-H2	21,340 - 23,320 <b>(1,471.7 - 1,608.3)</b>

All dimensions are for reference only and are subject to change.

All technical and dimensional information subject to change. All general Terms and Conditions of sale, including limitations of our liability, apply to all products and services sold.