

Materials and Features

- ▶ Accuracy: 0 - 10,000 PSI ± .5%  
15,000 & 20,000 PSI ± .1%  
30,000 & 35,000 PSI ± 1.5%
- ▶ All gauges are panel mount style.
- ▶ AISI 316 Stainless Steel Case.
- ▶ 316 Stainless Steel wetted parts.
- ▶ Laminated safety glass lens.
- ▶ Gauges come standard with Blow-out relief grommet.
- ▶ Gauges are glycerin filled when shipped.



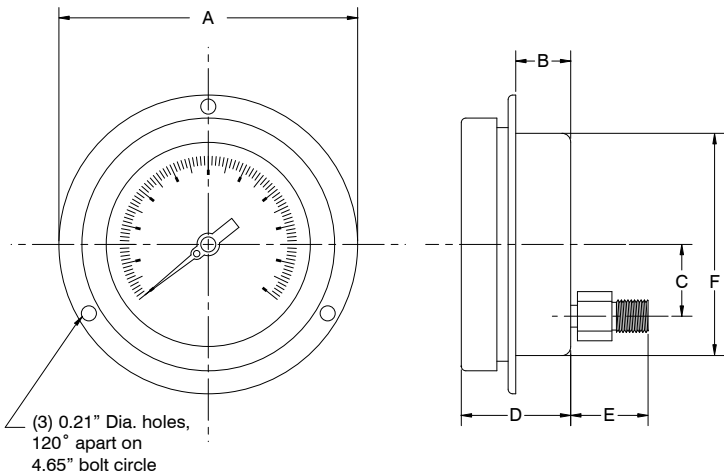
Options

Other gauge faces are available for different pressure units. These gauges can also be cleaned for oxygen service. See chart below for catalog number suffixes.

| Option                           | Suffix |
|----------------------------------|--------|
| PSI / BAR Gauge Face             | -B     |
| PSI / KPA Gauge Face             | -K     |
| Gauge Cleaned for Oxygen Service | -O     |

| Gauge Dimensions (in.) |      |      |      |      |      |         |
|------------------------|------|------|------|------|------|---------|
| A                      | B    | C    | D    | E    | F    | Cut Out |
| 5.20                   | 0.96 | 1.26 | 1.91 | 1.34 | 3.90 | 4.17    |

Front Flange Panel Mounting



| Standard Gauges Calibrated in psi |                      |                      |                     |             |
|-----------------------------------|----------------------|----------------------|---------------------|-------------|
| Catalog Number                    | Pressure Range (psi) | Minor Interval (psi) | Face Diameter (in.) | Connection* |
| 1PG44P                            | 0 - 1,000            | 10                   | 4                   | 1/4 MNPT    |
| 3PG44P                            | 0 - 3,000            | 50                   | 4                   | 1/4 MNPT    |
| 5PG44P                            | 0 - 5,000            | 50                   | 4                   | 1/4 MNPT    |
| 10PG44P                           | 0 - 10,000           | 100                  | 4                   | 1/4 MNPT    |
| 15PG44P                           | 0 - 15,000           | 150                  | 4                   | 1/4 MNPT    |
| 20PG44H                           | 0 - 20,000           | 200                  | 4                   | 4HF         |
| 30PG44H                           | 0 - 30,000           | 500                  | 4                   | 4HF         |
| 35PG44H                           | 0 - 35,000           | 500                  | 4                   | 4HF         |

\* The 4HF is a female connection for the 1/4" O.D. - high pressure coned and threaded type fitting.